

# MOHICAN NEWS

The people of the waters that are never still

Vol. XXVIII No. 4

N8480 Moh He Con Nuck Road • Bowler, WI 54416

February 15, 2021

## Stockbridge-Munsee Community COVID-19 Vaccine Distribution Priorities and Plan

February 8, 2021

This Plan is based on the approach outlined in the COVID-19 Vaccination Program Interim Playbook for Jurisdiction Operations (Version 2.0; referred to as "Playbook") issued by the Centers for Disease Control and Prevention (CDC). The Tribe agreed to comply with the Playbook in the vaccine distribution agreement with Indian Health Service (IHS). Changes required by federal law are incorporated automatically.

The CDC recognizes that supplies of the vaccine will, at least initially, be limited. Therefore, its Playbook provides for a phased approach for vaccine distribution based on the amount of vaccine available and prioritized need for the vaccine. The Playbook also allows jurisdictions to prioritize additional critical populations for vaccination.

### ESSENTIAL POPULATIONS

Essential Populations have highest priority for vaccination and are part of Phase 1 vaccination distribution

under the Playbook. This includes healthcare personnel and other critical infrastructure workforce members, persons in long-term care facilities, persons with underlying medical conditions that make them more at risk of severe COVID-19, and persons 65 years or age and older. The Tribe has integrated vaccination of these Essential Populations in its Phase 1-A and 1-B distribution plan.

Based on the CDC's recognition that tribal communities can be at increased risk of acquiring or transmitting COVID-19,<sup>1</sup> the Tribe also prioritizes vaccination of tribal members as Phase 1-C in its distribution plan. As life partners, including but not limited to spouses, are an integral part of a tribal member's life, such partners are offered immunization at the same time as the tribal member.

### CRITICAL POPULATIONS

The Tribe identifies the following groups as critical populations in

**Plan continued on page Five:**

## Stockbridge-Munsee VITA Program



The S/M VITA program has a heightened concern for the community we serve during these unprecedented times.

This year, we have modified our tax preparation process to meet the new safety measures in place. APPOINTMENTS ARE REQUIRED TO USE OUR SERVICE.

Each person utilizing our tax preparation service will, at their designated appointment time, bring all

of their information to the Tribal Offices where it will be received. The taxpayers will then leave the building and a preparer will begin their return. During this process the preparer will call the taxpayer, so they are virtually part of the return process.

Once the return is complete the taxpayer will need to return, apply their signature and receive their completed return along with their original documentation.

We look forward to assisting many people from our community this year, and appreciate your patience and understanding.

The program runs February 13, 14, 27, 28 and March 6-7, 2021.

PSRST STD  
US POSTAGE PAID  
SHAWANO, WI  
PERMIT NO. 135



## Tribe Working with FEMA



Thomas Kazik II - Reporter Tribal Incident Command Officer Wade Pommer is collaborating with FEMA (Federal Emergency Management Agency) on the possibility of using tribal nations for distribution of Covid-19 vaccines as they become more readily available. FEMA has also coordinated a zoom meeting between the Tribe's Emergency command team and the Wisconsin Emergency Director on Monday Feb. 8th. More information on the Covid-19 Pandemic can be found at <https://Caih.jhu.edu/resource-library/>.

FEMA's is here to serve the United States by helping its people and first responders, especially when they are most in need. It identifies FEMA's core values of compassion, fairness, integrity, and respect. Finally, there are nine guiding principles that provide overarching direction to FEMA employees for the performance of their duties: Teamwork, Engagement, Getting Results, Preparation, Empowerment, Flexibility, Accountability, Stewardship, and Accessibility. FEMA continues to adapt and develop innovative **FEMA continued on page Six:**

## Historic Preservation Office Repatriates 1750's Mohican Scoop from Stockbridge, MS Residents

By Trudy Fadding, Historic Preservation Intern

The Arvid E. Miller Memorial Library Museum will soon be receiving a new addition to its collection -- an 18th century Mohican scoop, or eating vessel, that is attributed to the Stockbridge Mission period. The scoop is being repatriated by Greg and Paula Gimblette, residents of Stockbridge, Mass., who previously repatriated a Mohican bow found within the fireplace of their 1750 home.

When Greg Gimblette learned about the scoop, the only indication of its origins was an attached note which referred the to scoop as "Mission Mohican" and implied that it was purchased in Stockbridge around 1940. Excited by the potential discovery, Gimblette bought the scoop and quickly contacted Rick Wilcox and Tribal Historic Preservation Officer Bonney Hartley to find out if it was truly **Scoop continued on pg Seven:**



Ash burl Mohican scoop or eating vessel from the 18<sup>th</sup> century. To eat with the scoop, one would use it as a ladle to scoop up the food, and then eat directly from it. It would be passed around and shared during the meal.

## What's Inside?

Ads	pg 14-16	Elders	pg 4
Directives	pg 12-13	Health	pg 11
Education	pg 3	Voices	pg 2-3



## Get Vaccinated to Protect Yourself, Family, and Community

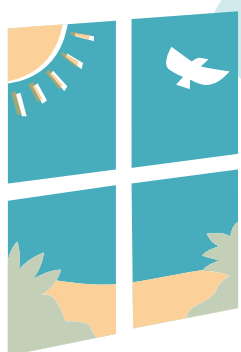
American Indians and Alaska Natives  
are disproportionately affected by the  
COVID-19 pandemic

A vaccine helps people from catching a certain disease, like COVID-19. All vaccines are as safe as possible and are a simple way to prevent illness and community outbreaks. A vaccination is not a treatment for people who are already sick with COVID-19. Getting vaccinated helps everyone.

- Know the facts and avoid sharing misinformation.
- Start by sharing information from trusted sources like CDC.gov and IHS.gov
- Encourage your loved ones to get vaccinated.
- The more people in your community get vaccinated, the better everyone will be protected against COVID-19, especially those who are more vulnerable to serious illness, like elders and people in high-risk groups.
- A COVID-19 vaccine will help you from spreading the disease, and reduce your risk of getting sick, being hospitalized, or dying.
- COVID-19 vaccines are one of many important tools to help us stop this pandemic. It is important to use all the tools available to stop the pandemic, wear a mask, wash your hands, and watch your distance.

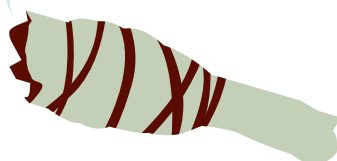
### How to cope with anxiety related to vaccination

- Stay connected with family and friends while keeping a safe physical distance. Take care of yourself and each other, and know when to get help.
- Create a list of personal self-care activities you enjoy such as exercising, meditating, singing a traditional song, praying, or connecting with nature.
- Take deep breaths and stretch.
- Maintain a sense of hope and positive thinking and remember these strong feelings of stress and anxiety will fade.



We are all in this together. Show compassion for those most closely impacted.

- Stay connected with family and friends through social media and video chat.
- Connect with your community and others with drumming and dancing video via social media.
- Attend a spiritual service through on-line streaming.



Ask your healthcare provider for more information.



## COVID-19 VACCINE INFORMATION

There has been some concern about being vaccinated. The Tribe supports vaccination as a way to protect the community and return to normal life. As part of our vaccination efforts the Tribe will be collecting information to determine how many Tribal Members, their household members, and employees are willing to receive the vaccine. All Tribal Members and Employees are encouraged to complete a COVID-19 pre-registration form for their household.

Once completed you will be in a database to be called when vaccines are available.

Please complete a Pre-registration Form at:

[www.mohican.com](http://www.mohican.com)

If you cannot access this online  
please call: 715-793-4111

We have staff ready to help you complete the pre-registration form.

Monday-Thursday (8:00 am – 4:00 pm)

For all COVID-19 related updates please see visit the Tribal Web page: [www.mohican.com](http://www.mohican.com)

Express your thoughts and opinions. Let your voice be heard.  
We welcome your letters to the Editor and the Community.

## Community Voices

Letters of opinion can be dropped off at Mohican News in the Tribal Offices or can be mailed to:

### Mohican News

N8480 Moh He Con Nuck Road  
PO Box 70  
Bowler, WI 54416

e-mail: [mohican.news@mohican.com](mailto:mohican.news@mohican.com)

Please type your letters or print clearly and include your signature, address, and daytime phone number. Letters must be 500 words or less. All letters are subject to editing and may require confirmation. Some may be rejected due to inappropriate content as deemed by our editorial board. The views of our readers are not necessarily the views of the Mohican News, its staff, or the Stockbridge-Munsee Tribe.

STOCKBRIDGE-MUNSEE  
COMMUNITY  
Band of Mohican Indians

PUBLISHER:  
Stockbridge-Munsee Community

EDITOR:  
Jeff Vele

STAFF REPORTER:  
Thomas Kazik

EDITORIAL BOARD:  
Maggie Bennett  
Misty Cook  
Jody Hartwig  
Joleen Kroening  
Brock Schreiber

The *Mohican News* is published twice monthly by:

Stockbridge-Munsee Community  
PO Box 70  
N8480 Moh He Con Nuck Road  
Bowler, WI 54416  
Telephone: 715-793-4389

*Mohican News* welcomes articles, letters, photographs, and any publishable items of interest to Native Americans. All materials to be returned should be accompanied by a return self-addressed envelope with sufficient return postage.

A one-year subscription rate is \$12.00 for 24 issues. Send check or money order to *Mohican News*.

*Mohican News is a member of:*  
NAJA (Native American Journalist Association)

STOCKBRIDGE-MUNSEE COMMUNITY Band of Mohicans

# MOHICAN NEWS

Enrolled Tribal members: FREE

## SUBSCRIBE TODAY!

The voice of the Stockbridge-Munsee Community  
24 issues a year

Non-enrolled: \$12.00 per year

NAME \_\_\_\_\_  
ADDRESS \_\_\_\_\_  
CITY \_\_\_\_\_ STATE \_\_\_\_\_ ZIP \_\_\_\_\_  
COMPANY \_\_\_\_\_

PLEASE CHECK:

- NEW SUBSCRIBER, ENROLLED MEMBER
- NEW SUBSCRIBER, NON-ENROLLED MEMBER
- RENEWAL
- ADDRESS CHANGE

MAIL TO:  
Mohican News  
PO Box 70  
Bowler, WI 54416

Voice: 715-793-4389  
Fax: 715-793-1307  
[mohican.news@mohican.com](mailto:mohican.news@mohican.com)

# Voices



The Education & Career Services Department wishes to share our sincere Congratulations to:

**Avari Miller, Doctor of Chiropractic 11/20/2020.**

**Michaela Welch, BA in Communications & Media Studies on December 4, 2020.**

## ATTENTION TEACHERS

If you are a Stockbridge-Munsee enrolled member with a degree in Education and working in education please provide the S/M Education office with your name and contact information by **Friday, March 26<sup>th</sup>** to **P.O. Box 70, W13447 Camp 14 Road, Bowler WI 54416** or email the information to [jolene.bowman@mohican-nsn.gov](mailto:jolene.bowman@mohican-nsn.gov). If you have any questions please contact Jolene Bowman, Director of Education and Career Services at (715) 793-4060.

## NATIONAL GUARD DRIVE-THRU COVID-19 TESTING EVENT

**February 23, 2021  
8:00 am – 4:00 pm  
February 24, 2021  
9:00 am – 5:00 pm**

Open to the Public - FREE

W13817 CTY HWY A, Bowler, WI

Pre-registration not required but encouraged go to: [www.register.covidconnect.wi](http://www.register.covidconnect.wi)

## Enrollment Department

Attention: Tribal Members update your contact information changes with the Enrollment offices. Addresses, Phone numbers, and emails. The Enrollment Department notifies all tribal entities of these changes.

Alpha Creapeau, PhD

[Alpha.creapeau@mohican-nsn.gov](mailto:Alpha.creapeau@mohican-nsn.gov)  
715-793-4677

Delores Meek  
[Delores.meek@mohican-nsn.gov](mailto:Delores.meek@mohican-nsn.gov)  
715-793-4671

## CIVIL SUMMONS

In the matter of the Paternity of: M.V.G. (D.O.B.: 12/14/2019)

Case No. 2020-PA-0005

Stockbridge-Munsee Tribal Child Support Agency, and  
Leanna J. Granquist  
Petitioners,

Aaron M. Vele,  
Respondent.



YOU ARE HEREBY NOTIFIED THAT a Civil Complaint has been filed against you.

YOU ARE INSTRUCTED TO FILE A WRITTEN ANSWER to the Complaint within Twenty (20) days of the date this Summons and attached Complaint were served upon you. The answer must be filed with the Tribal Court at the Stockbridge-Munsee Tribal Offices at N8476 Moh He Con Nuck Road, Bowler, WI 54416, and a copy must be delivered or sent to the plaintiff or his/her attorney.

IF YOU FAIL TO ANSWER the complaint within the Twenty (20) days of the date you were served, a JUDGMENT OR DEFAULT maybe entered and the plaintiff maybe awarded the relief asked for in the complaint.

DATED: July 16, 2020

## Veterans Corner

203 W. Main St  
Bowler, WI. 54416

Gregg W. Duffek,  
Tribal Veterans Service  
Officer  
Office: 715-793-4036  
[gregg.duffek@mohican-nsn.gov](mailto:gregg.duffek@mohican-nsn.gov)



715-793-4036

The Cultural Affairs Department gives a GREAT BIG THANK YOU!

To everyone who made a kind donation (To the homeless Project)

We appreciate your generous support in this good cause ONEEWE! ANNUSHIIK! THANK YOU!

From, Heather Bruegl, Molly Miller, and Yvette Malone

ARVID E MILLER MEMORIAL LIBRARY AND MUSEUM

## UNLIKELY CONDUCTORS: NATIVE AMERICANS AND THE UNDERGROUND RAILROAD

FEBRUARY 24, 2021

2:00 PM

LIVE ON FACEBOOK:

ARVID E MILLER LIBRARY MUSEUM AND CULTURAL AFFAIRS DEPARTMENT

We learn in history class that the Underground Railroad was extremely instrumental in aiding slaves escaping captivity and searching for freedom. What we always don't learn about is the role that Native Americans, who sometimes were slaves themselves, played in helping those slaves get to freedom. Learn about the important role that tribes played in assisting others in the Underground Railroad.



# LOVE YOUR ELDER DAY!



Drive thru and pick up a CARE BAG filled with  
**FUN ACTIVITIES for YOUTH AND ELDER!**

DATE: February 19th, 2021 TIME: 11Am to 3pm

LOCATION: Eunice Stick Gathering Place



# On the Trail Home



Gerald L. "Jerry" Davids

and making maple syrup, and also loved food. He was also active in coaching his sons in baseball. Jerry will be dearly missed by all who knew and loved him.

Jerry is survived by his children, Lee (Lisa Hopinkah) Davids of Lac du Flambeau, Ethan (Deanna Maulson) Davids of Lac du Flambeau, and Tanner (Jennifer Bjork) Davids of Lac du Flambeau; grandchildren, Gianna, Jamison, Leah, Jalen, Joelle, Chandler, Ryker, Kenna, Ethan II, Axton, and Carver; mother, Ardell (Jeff) Tarr of Beaver Dam; and siblings, Diane Davids, Dale Davids, Jean Davids, and Vicky Burens. He is further survived by nieces, nephews, other relatives and friends.

He is preceded in death by his father Oscar Davids and one brother Joby Davids.

Gerald L. "Jerry" Davids, age 58 of Bowler, passed away on Monday, February 1, 2021. Jerry was born on May 23, 1962 to Oscar and Ardell (Long) Davids in Milwaukee. Jerry was a high-performance machinist and mechanic for 2-stroke racing machines. He loved his career at Northstar Casino where he enjoyed greeting the customers for over 20 years. Jerry was an avid outdoorsman and enjoyed bow hunting, fishing,

A funeral service for Jerry was held on Monday, February 8, 2021 at the Lutheran Church of the Wilderness in Bowler. Burial will be in the Stockbridge Indian Burial Grounds. Visitation was at the church on Sunday, February 7, 2021 and again on Monday until the time of services.

[www.swedbergfuneralhome.com](http://www.swedbergfuneralhome.com)

# VIRTUAL SEED STARTING GLASS

**JUMP START YOUR GARDEN THIS YEAR**

Featuring videos and informational sheets on when and how to start your vegetable plants

**SUPPLY PACKETS WITH SEEDS AND SOIL WILL BE AVAILABLE IN EARLY MARCH**

To participate, register for your supply packet by February 20th at:  
<https://forms.gle/TpNwCKVM8yr4q2zD9>  
or contact Kellie Zahn at 715-793-3031



**From the Earth  
Mohican Nation**

Interested in fresh, locally  
grown produce?

## Join our Community Supported Agriculture Program

### How does it work?

- Fill out a From the Earth CSA membership agreement, space is limited to 50 participants
- For 15 weeks from late June through early October, we'll pack a box of fresh veggies just for you
- Each week you can expect between 4 to 8 different vegetables in your box, expect a wider variety of produce into late summer and fall.
- Pick up your share from the Land Office on Wednesdays from 11:30 am - 1:30 pm or 4:00 - 4:45 pm






Receive a variety of fruits and vegetables in your CSA box each week

### Membership Options

Half Share	Full Share
Great for individuals or couples	Great for families or couples who enjoy eating veggies
\$75 when paid in advance or \$5/ week in season + \$10 deposit by May 1st	\$150 when paid in advance or \$10/ week in season + \$20 deposit by May 1st

Membership forms available at <https://forms.gle/aflCSYj7mxUgSkSF8>  
Mohicanag.com or the Land Management Office.  
Questions? Contact Kellie Zahn, Agriculture Agent, at  
[kellie.zahn@mohican.com](mailto:kellie.zahn@mohican.com) or 715-793-3031

**Plan cont from page One:**

order to help control the risk of acquiring or transmitting COVID-19 within this tribal community. Vaccination of these Critical Populations will be prioritized once the Essential Populations are vaccinated.

- People who are part of the household of Stockbridge-Munsee tribal members – based on their status of also being part of this tribal community and an exposure risk for tribal members. Again, the focus is on people served through the Stockbridge-Munsee Health Center (Health Center).
- IHS beneficiaries served by the Health Center – based on their status as persons who are also part of tribal communities and have an existing relationship with the Health Center.
- Employees of the Stockbridge-Munsee Community – based on being a possible exposure risk for tribal members

The Stockbridge-Munsee Community intends to move into vaccination for the Critical Populations under its Distribution Plan once the Essential Populations are vaccinated.

**DISTRIBUTION PLAN**

There are 3 phases of COVID-19 distribution. Each phase identifies priorities for vaccination under that phase. Phase 1 is the initial distribution when there are limited supplies. Phase 2 is when there are larger supplies. Phase 3 is when there are supplies enough for the entire U.S. population.

In addition to the overall priorities identified in this Plan, the Tribe also prioritizes providing people with their 2nd shot in a two-shot vaccine series. As timely 2nd shot is required to make the vaccine effective, the completion of the series is prioritized over providing additional people with their 1st vaccination shot.

As the COVID-19 vaccine is perishable and has a short shelf-life, the Health Center may vary from the distribution priority if necessary to ensure that vaccine supplies are used while effective. The identified priority of distribution shall be followed as much as possible.

**PHASE 1-A**

Consistent with the Playbook, the initial distribution of the vaccine will be provided to persons in Phase 1-A. Vaccination may be staged to ensure that operations are not adversely impacted.

- Healthcare personnel who provide direct care, as well as cleaning/maintenance staff with responsibilities in patient areas, at the Health Center
- Tribal EMS personnel
- Long-term care facilities – Ella Besaw Center residents and employees
- Occupational Health employees

**PHASE 1-B**

Once the initial Phase 1-A populations are vaccinated, the Tribe will expand vaccination to the people who are the rest of the Tribe's Essential Populations and then to the Tribe's Critical Populations. The Tribe recognizes the importance of protecting both vulnerable individuals as well as ensuring that tribal operations are maintained. To ensure both, vaccine allocations will be distributed with 50% going to essential populations and 50% to essential workers for the first delivery of the Pfizer vaccine (which was the vaccine approved and delivered 1<sup>st</sup>). For the first delivery of the Moderna vaccine as well as the subsequent vaccine deliveries, the allocations will be distributed with 80% of doses going to essential populations and the remaining vaccine doses (~20%) allocated to essential workers. Once essential workers are vaccinated, then 100% of the allocation goes to essential populations in the order identified until Phase 1-B vaccination list is complete.

- Essential Worker Populations – Priority is based on the order identified. Vaccination may be staged to ensure that operations are not adversely impacted.

- Emergency response – law enforcement and volunteer firefighters
- On-site staff at the Health Center (in addition to staff under Phase 1-A)
- Medical transport and Elderly transport employees
- Food packaging and distribution workers – both employees working with Food Distribution and Elderly's meal delivery
- Housing maintenance employees
- Head Start employees
- IT technicians (frontline staff)
- Utility and Roads employees
- Casino security and housekeeping employees
- Housekeeping Staff to include the following positions: Housekeeping Coordinator, Housekeeping Supervisor, Housekeeper, Room Attendant and Hotel Maintenance Technician
- C-Store employees
- Stockbridge-Munsee leadership (Tribal Council, Chief Judge and the COVID management team)

- Essential Population – Persons at higher risk

- Tribal members who are active Health Center patients and are residents of long-term care facilities not located on the Tribe's reservation
- Active Health Center patients with medical conditions who possess **risk factors for severe COVID-19 illness**. Within this category, patients with multiple risk factors will be vaccinated first with older patients vaccinated before younger patients in each group. The follow-

ing parameters were used as risk factors for this assessment.

- Lung disease, including chronic obstructive lung disease (COPD), cystic fibrosis, pulmonary fibrosis, and moderate to severe asthma
- Heart disease, including heart failure, coronary artery disease, and hypertension
- Chronic kidney disease
- Chronic liver disease
- HIV
- Transplant of any sort
- Any sort of cancer excluding skin cancer
- Diabetes (patients treated as if have 2 risk factors for the assessment of multiple factors for severe COVID-19 illness)
- Obesity (BMI equal or greater than 30)

**PHASE 1-C**

- Essential Populations
  - Stockbridge-Munsee Tribal Members.

- Tribal members ages 65 and older and their partners
- Tribal members ages 55 to 64 and their partners
- Tribal members ages 45 to 54 and their partners
- Tribal members ages 35 to 44 and their partners
- Tribal members ages 25 to 34 and their partners
- Tribal members ages 18 to 24 and their partners
- Tribal members ages 0-18 – once a vaccine is approved for use by children

- Other active Health Center patients 65 years of age or older (with older persons vaccinated earlier)

- Critical Populations – As identified under Phase 2.

**PHASE 2**

The Tribe moves to Phase 2 vaccination when it begins receiving larger supplies of the vaccine.

Phase 2 will begin with vaccination of any persons who are part of the Essential Populations that have not yet been vaccinated and then moves to Critical Populations.

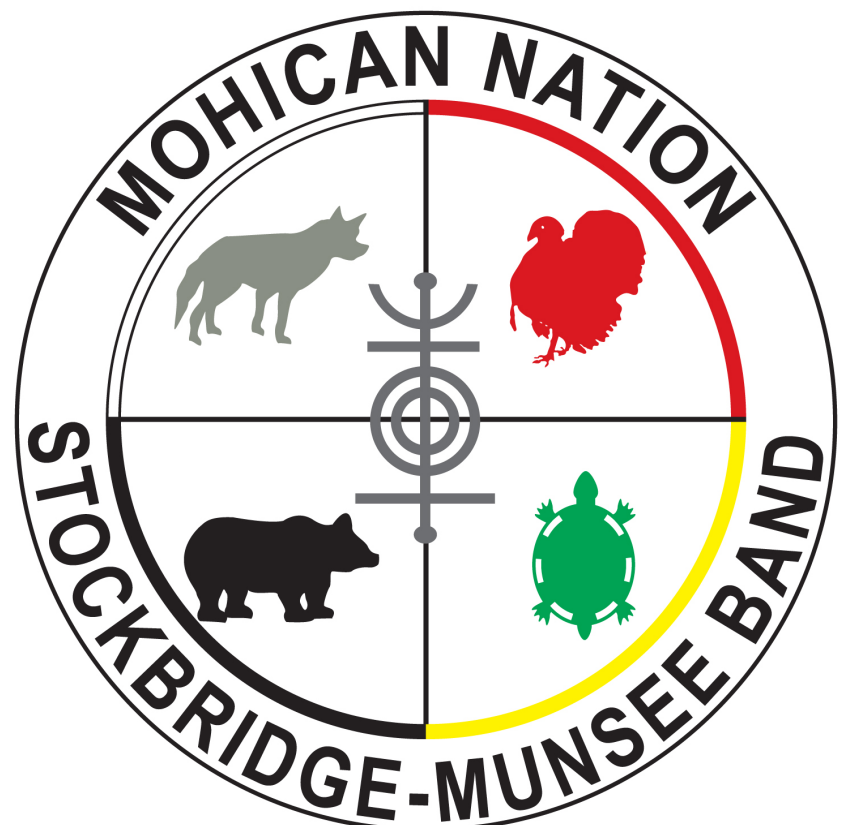
- Essential Populations. Vaccination prioritized as identified in Phase 1.
- Critical Population – Individuals who are part of a household of Stockbridge-Munsee tribal members with higher priority for households of members age 65 and older
- Other Critical Populations.
  - IHS beneficiaries served as active patients at the Health Center
  - Employees of the Stockbridge-Munsee Community
    - Critical services such as payroll, finance, and other critical internal services that are necessary for operations to continue
    - Employees who work directly with the public daily or frequently
    - Employees who interact with larger numbers of employees daily or frequently (e.g., directors, managers)
    - Employees who work with other people less frequently are lower priority for vaccination
- Existing active patients of the Health Center

**PHASE 3**

Vaccine supply is adequate to serve all people who want vaccination. However, distribution will remain prioritized based on Essential Populations and then Critical Populations based on staffing capacity to provide vaccination through the Health Center.

Once Essential and Critical Populations are served, then vaccination will be available to any other patients served through the Health Center and the general public.

(1) Playbook, Section 4, page 15 (Version 2.0).



**FEMA cont from page One:**

ways to provide better emergency management services in a changing environment. However, the Agency must also stay true to its core values and guiding principles, and it must incorporate them into a strategic level of guidance. Preparedness is not an outcome. It is a process of continuous engagement toward achieving a state of readiness. Preparedness activities such as planning, equipping, training, and exercises help build capabilities within all the emergency management effort.

Tribal governments and their members are an essential part of FEMA's National Emergency Management Team. Effective relationships with tribes are necessary to fulfill FEMA's mission of working together to improve disaster preparedness and response. FEMA is committed to supporting Indian Country in its efforts to build more resilient and better prepared communities. Along with the need to ensure the safety of tribal communities and tribal lands in the face of

disasters, FEMA shares the U.S. government's unique nation to nation relationship with federally recognized tribes. FEMA acknowledges the sovereignty of federally recognized tribes and is committed to enhancing our working relationship with tribal governments to improve emergency and disaster responsiveness throughout Indian Country.

The Tribe's Emergency Command Team consist of Allen Quinney, Amanda Stevens, Andrew Miller, Brian McDonald, Dennis Puz, Linda Mohawk-Katchenago, and Todd Van Den Heuvel. This team's job is to assist Pommer in making sure the tribe is prepared and ready for current and future pandemics, disasters, state of emergencies. During an interview Wade stated "I cannot stress the importance of this team and the amazing job they have been able to do during this Pandemic. I am so thankful as an employee and community member that this team took on these extra duties during this pandemic."

**Important COVID-19 Information UPDATE**  
February 5, 2021



The Stockbridge-Munsee Tribal Council and the SMC COVID-19 Taskforce continue to work diligently in fighting the COVID-19 Pandemic. Tribal Leadership is in constant contact with its national and state peers to advocate on behalf of not only the Tribal Membership, but members of the community and their employees for resources such as access to COVID-19 testing and COVID-19 vaccines.

**COVID-19 Testing**

By networking with the National Guard of Wisconsin the Tribe increased the access to COVID-19 testing, providing testing opportunities every other week for Tribal Members, all Tribal Employees, Community Members and the general public. Task Force members have reached out to Bowler and Gresham School systems encouraging them to partake of the free public events. This partnership resulted in the Tribe providing a testing site and support staff while the National Guard provided COVID-19 test kits and personnel to administer the test. This allowed not only greater access to COVID-19 testing but decreased demand on the Stockbridge-Munsee Health & Wellness Center (SMHWC) COVID-19 Testing resources. The SMHWC was and is also able to continue normal operations during the COVID-19 testing events thus not disrupting services to patients.

The most significant benefit of the Tribe's robust COVID-19 testing program was identifying multiple COVID-19 positive cases who

were totally unaware they were infected with the virus. They showed absolutely no symptoms.

**Contract Tracing**

The Tribal Council allocated resources to contact tracing efforts which have proven to be critical in reducing the spread of the COVID-19 virus. This became extremely important when Shawano County couldn't continue with their contact tracing. To date the Tribe has four Contact Tracers; with the goal to hire two more.

The role of the Contact Tracers is to get positive patients into quarantine as quickly as possible. They also contact trace all direct and close contacts of the positive individual thus stopping the spread of the virus among employees and family members in households.

Contact Tracers also monitor quarantined and isolated patients' health as they progress through the virus. The most important result of this initiative is the lives saved when patients were unsure if they should be seeking further medical help and Contact Tracers were able to assess and advise them to seek emergency medical care.

**Vaccination**

Tribal Nations were given two options for distribution of the COVID-19 vaccine; to receive the vaccine from the State or from

**Important COVID-19 Vaccine Information UPDATE**

Look on the Tribe's Webpage [www.mohican.com](http://www.mohican.com) for current information for vaccine sites within the state of Wisconsin.

To schedule an appointment go to <http://www.myprevea.com> **If you are unable to schedule an appointment online call 1-833-344-4373 or 1-920-496-4777 or 1-920-496-4700.** (If the numbers are not working please call (1-888-277-3832)

Thedacare will manage COVID-19 vaccine scheduling primarily through MyThedaCare/Mychart. Community are asked to follow these four steps to create a MyThedaCare account if they do not yet have one:

- Visit ThedaCare.org
- Click "MyThedaCare" at the top of the page
- Click "Sign Up Now"
- Follow the prompts

**If you cannot access online care options for any reason, call 920-830-6877 or 800-236-2236.**

I.H.S. (Indian Health Services). The decision had to be made by October 30, 2020.

Based on the following information the Tribal Council chose to receive vaccine from I.H.S. I.H.S. provided more information on the vaccination development and distribution process than the State. The Bemidji region has an officer on the vaccination distribution planning team at Health & Human Services office. IHS has shared their draft plan with Tribe. IHS works closely with McKesson, the selected COVID-19 vaccination distributor and has a contract with McKesson for IHS medication distribution.

Additionally, the Tribe was required to submit a distribution plan at the time they identified their vaccination source. The Center for Disease Control (CDC) provided a master plan that prioritized populations to receive vaccinations in phases.

In December of 2020 the Tribal Council authorized a COVID-19 Vaccine Distribution Priorities and Plan (the Plan). The Plan uses a phased approach for vaccine distribution based on the amount of vaccine available and prioritized need for the vaccine. The full-distribution plan is posted on the Tribes webpage under the COVID-19 updates.

The Plan has four phases: Phase 1-A, 1-B, Phase 2, and Phase 3. Phase 1A covers Healthcare Workers, EMS, Ella Besaw residents and staff, and Occupational Health Phase 1B covers essential employees and active patients of record at the clinic with documented health risks. Phase 2 covers enrolled members by age groups, household members, and employees Phase 3 covers all who have a connection to the community

Please see visit the Tribal Web page: [www.mohican.com](http://www.mohican.com) COVID-19 Updates to see the full plan. To date the Stockbridge-Munsee Health & Wellness Center administered vaccines to 495 people.

On January 15, 2021, Wisconsin State Governor Tony Evers announced a new mobile COVID-19 vaccination program. Networking with Wisconsin National Guard and the University of Wisconsin System his goal is to increase vaccine access and get as many people vaccinated as quickly, safely, and equitable as possible.

The Tribal Council and the Task Force are networking with the State to explore the possibility of our community becoming a site for a rural vaccination center. The Tribe is in the preliminary planning stages to determine logistically how to make that happen. If this is successful it will give not only the Tribal Members and Community more access to vaccines but the general rural public in our area, as well.

There has been some concern about being vaccinated. As part of the Tribe's vaccination efforts they will be collecting information to determine how many Tribal Members and their household members and employee are willing to receive the vaccine. The Tribe has created a COVID-19 Vaccine pre-registration process. All Tribal Members are welcomed to complete the pre-registration form at [www.mohican.com](http://www.mohican.com) Your name will be in a databased that will be used to contact individual when vaccines are available.

Should you need help completing the form please call 715-793-4111 from Monday to Thursday 8:00 am to 4:00 pm central time.



Greg and Paula Gimblette pose with the scoop in the 1750 home. Records show meetings between Mohicans and English colonists occurred within their house. A side view of the scoop shows the bird motif on the handle.

**Scoop cont from page One:**  
Mohican and of the 18th century.

Hartley's research led to comparing similar scoops of the same period and sharing with the Historic Preservation Committee who offered their views on the scoop's purpose. To eat with the scoop, one would use it as a ladle to scoop up the food, and then eat directly from it. It would be passed around and shared during the meal. That function was further backed up with additional research of similar styles. This scoop is made from the burl of an ash tree and has the effigy of a bird on the handle.

Other Mohican scoops or eating vessels from the 18th century have similar features, including a scoop from circa 1780 at the New York State Museum whose handle also has an animal effigy. A scoop from the Stockbridge Mission period in the collection at the Mission House in Stockbridge has a similar handle; the carving could be a beaver or an otter instead of a bird. The similarities in the shape of the bowl and the carvings on the handles of other Mohican scoops from the 18th century are strong evidence that this scoop is also of the Mohican style and in the time-frame of the Stockbridge Mission period.

The return of this scoop to the community is incredibly significant as most other surviving eating vessels of this kind are only housed in museums. When asked about his thoughts on returning the scoop to the Stockbridge Munsee Community, Greg Gimblette's response was, "That was my goal all along". Paula and Greg Gimblette are life-long collectors of early American artifacts, and they use their extensive knowledge about 18<sup>th</sup> century New England to keep their 1750 home true to the time period. The Gimblettes explained that they are not collectors of Native American items. How-

ever, they have gained an appreciation for Mohican history in the area after working with Rick Wilcox to repatriate the bow in 2018, and to learn about the history of their house during the Stockbridge Mission period.

Since repatriating the bow, now on display at the Arvid E. Miller Memorial Library Museum, the Gimblettes realized that purchasing the scoop and returning it to the Stockbridge-Munsee Community would be greatly appreciated.

I got the chance to travel with Bonney Hartley to visit the Gimblettes when they signed a Deed of Gift for the scoop in January. As a resident of Stockbridge myself, it has been both exciting and sobering to learn more about Mohican history in the town. I was thrilled to help in facilitating the return of the scoop, and hope to have an opportunity to see it again once it has been returned to Wisconsin. For me, witnessing the return of this historic item to the Stockbridge-Munsee Community emphasized how meaningful repatriation is, and the complexity of a seemingly simple process. Even so, repatriation by donation is much more straightforward than repatriation through NAGPRA, and the Historic Preservation Office encourages collectors of Native American objects to follow in the footsteps of the Gimblettes and consider returning these important heritage items.

The scoop will be proudly brought home to the Arvid E. Miller Memorial Library Museum and restore another piece of the Tribe's heritage.

The Historic Preservation Office is working on further repatriation efforts from this time period in Stockbridge, this time with the Mission House Museum, and hopes to welcome home additional cultural items soon.

## GLITC Leads the Way Through Uncertain Times

In a year dominated by destabilizing events, the Great Lakes Inter-Tribal Council (GLITC) truly embodied its mission to enhance the quality of life for all Native people. Powered in large part by existing state and federal grant funding, and an additional COVID-19 Emergency Management Assistance grant awarded by the Medical College of Wisconsin and the Advancing a Healthier Wisconsin Foundation, GLITC served as a leader, innovator and conduit for local Native communities.

"Our programs have done amazing work during this challenging time. Their accomplishments, adjustments and collaborations are testimony to their commitment to ensuring Tribal communities continue to have access to vital services, supplies and information during the pandemic," said Bryan Bainbridge, CEO of GLITC.

30 unique programs collaborated internally and with numerous community partners to serve thousands of individuals and families. Program accomplishments include:

- Helping to provide millions of pounds of food to those in need.
- Prioritizing and distributing nutrition assistance and education.
- Adapting curriculum, trainings and services to be available online.
- Expanding technology resources for Elders and emerging businesses.
- Measuring the impact of the pandemic while providing economic development strategies.
- Creating community with drive-thru events including baby showers and diaper drives.
- Investing in vocational resources to serve those with disabilities.
- Creating and distributing printed and digital collateral to amplify program messaging.
- Acquiring highly specialized lab supplies to support research linked to health disparity issues.

Native populations that felt the impact of these accomplishments included Tribal Elders, families, mothers, youth, high school and college students, and at risk-populations.

Future program initiatives include recording an audio book, virtual exercise sessions, cooking dem-

onstrations to support nutritional training, and emergency communications systems implemented online and via direct messaging.

Addressing the impact of COVID-19 pandemic within Native populations was paramount in GLITC's efforts across programs and collaborations. Organization-wide strategies included investing in mitigation, tracking, contact tracing, monitoring employee symptoms, distribution of personal protective equipment, creating and implementing assessment tools for pandemic impact, and creating opportunities for immunization coordinators to connect. GLITC initiatives related to addressing COVID-19 also received funding from Centers for Disease Control and Prevention.

Adapting to a rapidly changing landscape, GLITC programs pivoted their services swiftly to offer virtual outreach while simultaneously ensuring communities at risk and in need safely received the physical supplies they needed in a timely manner.

In 2020, GLITC created a diverse range of new, essential services while maintaining current program offerings and are looking to the future to explore strategic partnerships to extend their reach.

Through additional funding, GLITC kept Native communities informed, safe and connected during extremely uncertain times.

### About GLITC:

The Great Lakes Inter-Tribal Council's mission is to enhance the quality of life for all Native people. GLITC was incorporated in 1965 with the purpose of providing a mechanism for Tribes to work through the challenges of governance and services to their constituents. Through Inter-Tribal unity, Tribes could better develop and implement programs, seek outside assistance, and gain leverage in dealing with federal, state and local government.

GLITC's strength lies in the resolve of the Tribes to be independent and self-governing, yet to come together in a unified forum to discuss and resolve those issues that require Inter-Tribal unity and attention. As independent governments, the Tribes operate widely varied government service systems, and address their communities' needs in numerous ways. GLITC supplements the member Tribes' own efforts through development and operation of health and human service programs, education programs, and economic development programs in the reservation communities it serves.

# Wishing for Warmer Weather





# Wishing for Warmer Weather





Arvid E. Miller Memorial Library Museum  
N8510 Moh He Con Nuck Rd.  
Bowler, WI 54416

Join us on February 22, 2021, @ 5:00pm  
to learn about  
Black History Month

### Featuring

#### “Black History Month for Kids”

10 minutes long

In this video for kids, you will learn about how  
Black History Month began and why it is so important

AND

#### “Civil Right Heroes”

45 minutes long

You will learn about the lives of Dr. Martin Luther King Jr., Rosa Parks, Thurgood  
Marshall, Ruby Bridges, and Jackie Robinson

To register send email to: [heather.bruegl@mohican-nsn.gov](mailto:heather.bruegl@mohican-nsn.gov) [yvette.malone@mohican-nsn.gov](mailto:yvette.malone@mohican-nsn.gov)



### 2021 Chamber Board of Directors Elected

(SHAWANO, WI) –The Shawano Country Chamber of Commerce named new board members and officers for 2021. Tammy Brzeczowski, Dynamic Designs Unlimited has been named president; Zachary Linsmeyer, KerberRose is president-elect; Hank Wagner, Wagner Leadership Training is past-president; and Mary White, Nueske’s Applewood Smoked Meats is Treasurer. Newly elected board members include; Leann Gueths, Novolex; Chris Caldwell, College of Menominee Nation; and Mary White, Nueske’s. Julie Chikowski, ThedaCare Medical Center-Shawano and Roxanne Tilleson, The Rustic Shed were re-elected for their 2<sup>nd</sup> term. Keith Marquardt, Shawano County Parks was recently elected to the position of president of the Shawano Country Tourism Council (a division of the Shawano Country Chamber of Commerce) and will fill

the tourism representative position on the Chamber of Commerce board of directors. The board is comprised of 15 Chamber members from throughout Shawano County representing the areas of agriculture, manufacturing, retail/business, tourism, education, government, and professionals. Six additional liaison board members represent Shawano County, Shawano County Economic Progress, Inc., The Menominee Indian Tribe of Wisconsin, City of Shawano, and The Stockbridge-Munsee Band of Mohican Indians. The Shawano Country Chamber of Commerce is a 430-member organization that advances economic growth by coordinating resources and providing networking, promotion and education to businesses in Shawano and Menominee Counties.

## Important COVID-19 Vaccine Information UPDATE 2/06/2021



Look on the Tribe’s Webpage [www.mohican.com](http://www.mohican.com) for current information for vaccine sites within the state of Wisconsin.

Winnebago County COVID-19 Vaccination Clinic go <http://www.waupacacounty-wi.gov/> Scroll to “COVID-19 Updates” and click. Scroll to “Request a COVID-19 Vaccine” and click. Complete the form and click to submit. You will be contacted with an appointment.

#### Green Bay Region:

Prevea Health has partnered with the University of Wisconsin-Green Bay to launch a community COVID-19 vaccination clinic at the Kress Events Center on the UW-Green Bay campus starting late January.

#### Sheboygan Region:

Prevea Health has partnered with the University of Wisconsin-Green Bay Sheboygan Campus in Sheboygan to launch a community COVID-19 vaccination clinic at the Physical Education building starting Feb. 4.

#### Eau Claire Region:

Prevea Health has partnered with Jacob’s Well Church located at 3211 N 50th Ave, Chippewa Falls, WI 54729 to launch a community COVID-19 vaccination clinic starting Feb. 1, 2021.

To schedule an appointment go to <http://www.myprevea.com>

**If you are unable to schedule an appointment online call 1-833-344-4373 or 1-920-496-4777 or 1-920-496-4700.** (If the numbers are not working please call (1-888-277-3832)

#### Appleton Region:

Thedacare will manage COVID-19 vaccine scheduling primarily through MyThedaCare/Mychart. Community are asked to follow these four steps to create a MyThedaCare account if they do not yet have one:

- Visit ThedaCare.org
- Click “MyThedaCare” at the top of the page
- Click “Sign Up Now”
- Follow the prompts

**If you cannot access online care options for any reason, call 920-830-6877 or 800-236-2236.**

#### Marshfield Clinic Health System (MCHS)

Visit the Marshfield Clinic Health System website at <https://www.marshfieldclinic.org/CovidVaccine> to complete a survey for the COVID-19 vaccine or call **877-998-0880**. We request patience as we anticipate a high number of people reaching out to us to schedule a vaccination.

## Isolation/Quarantine Plan for Stockbridge-Munsee Community

January 22, 2021

This Plan outlines the Stockbridge-Munsee Community's overall approach of how quarantine and isolation status is applied during the COVID-19 public health emergency. The Tribe has authorized the issuance of isolation and quarantine orders for communicable diseases, like COVID-19, under Chapter 26A of tribal law. The Tribe reserves the right to modify this plan or actions taken under it at any time based on with developing guidance and best practices for COVID-19. Additionally, while this Plan outlines the overall approach, specific directions may differ as appropriate based on medical conditions.

### DEFINITIONS

• **Close Contact:** A person is considered to be a close contact of a person who tested positive for COVID-19 if they met any one of the following scenarios: 1) Did you have direct physical contact with the person (e.g: hug, kiss, handshake)? 2) Were you within 6 feet of the person for more than 15 minutes within a 24 hour period? 3) Could the person have had contact with any of your respiratory secretions (e.g. Coughed/sneezed on, contact with dirty tissue, sharing a drinking glass, food or towels or other personal items). 4) Did you stay overnight for at least one night in a household with the person (i.e., household contact)?

• **Indirect Contact:** A person is an indirect contact if they have prolonged (15 minutes or more within a 24-hour period) contact with someone who is not positive, but is considered as having close contact (as defined above) to a person who tested positive for COVID-19.

• **Household contact:** Any person who lives in or spent at least one night in the house of a person who tested positive for COVID-19 during the infectious period.

• **Healthcare Worker:** Tribal EMS and any person at the Stockbridge-Munsee Health and Wellness Center who provides care to patients to include Pharmacy staff.  
**PERSONS UNDER QUARANTINE OR ISOLATION ORDERS**

**NOTE:** Persons who are under quarantine orders due to a positive COVID-19 test are not released from quarantine until directed by the contact tracer or medical that they are released.

Persons who tested positive for COVID-19:

Persons (both employees and non-employees) who tested positive for COVID-19 will be quarantined. If the person is under the Tribe's jurisdiction, they and their household will be quarantined per Chapter 26A of tribal law.

If the person is outside of the Tribe's jurisdiction, a quarantine

recommendation will be issued. The local public health authority where they live in may issue additional isolation/quarantine requirements.

If a person is tested at a site other than the Stockbridge-Munsee Health & Wellness Center, the person must inform the SMHWC at 715-793-5087 of their test date and results.

All persons who test positive will be contacted by contact tracers to identify who else may have been exposed to COVID-19. Persons who tested positive shall provide all information to the contact tracer to include past travel, symptoms, and who they were in contact with. Quarantine will be discontinued once the person with the positive case meets the following:

- 10 days have passed since symptoms first appeared or the positive COVID-19 test result AND
- You have had no fever for at least 24 hours (that is one full day of no fever without the use medicine that reduces fevers) AND

All symptoms have improved (for example, when your cough or shortness of breath have resolved) Employees will require medical authorization clearing them to return to work.

**Note:** Those with severe cases of COVID-19 such as hospitalization or those with compromised immune system may be required to quarantine for 20 days instead or 10. The determination will be made by a physician.

Household Contacts of a person who tested positive for COVID-19: Household contacts will be subject to an isolation order. If the household contacts are under the jurisdiction of the Tribe, they will be isolated per Chapter 26A of tribal law.

If the household contacts are not under tribal jurisdiction, an isolation recommendation will be issued. Their local public health authority may issue additional isolation/quarantine requirements. Employees of the SMC, including North Star Casino employees are required to report instances when members of their household are confirmed COVID-19 positive to Occupational Health.

All persons in a household of someone who tested positive will be contacted by contact tracers to identify who else may have been exposed to COVID-19. Persons in the household of someone who tested positive shall provide all information to the contact tracer to include past travel, symptoms, and who they were in contact with. Isolation of the household contacts will be discontinued once the person meets the following:

- 14 days have passed since the person in the household was released from quarantine.

o **NOTE:** For people who continued

to live in the same house, this 14-day timeframe begins at the end of the quarantine period for the person who tested positive (when they are released). This requirement is due to the fact that persons living with the infected person could be infected throughout the entire initial quarantine period when the person was infectious.

o **NOTE:** For people who do not continue to live in the same house (such as if they were a visitor for one night or the infected person is separated into an entirely separate area such as self-contained basement, camper, or cabin), then this 14-day period is begins as of the date of last contact with the person who tested positive. Community Health will need to accept that the separation is adequate in order to allow tracking under this provision.

And

- You do not develop symptoms (Fever, cough, shortness of breath, sore throat, muscle pain, loss of taste or smell). If symptoms develop during the 14-day period, you must report symptoms to the SMHWC (715-793-5087). The SMHWC will relay the information to medical providers for further guidance as to a need for testing and isolation/quarantine status.

Employees will require medical authorization clearing them to return to work.

People who have Close Contact with a person identified as having COVID-19 or those who had Close Contact (2 days prior or less) to a person who later tested positive for COVID-19.

Employees who had close contact with a person known to have COVID-19 shall notify Occupational Health of the close contact and isolate themselves in their home. Contact tracers will interview those with close contact to confirm the contact. If the contact is confirmed, those with close contact will be tested for COVID-19. If the results are positive the person will follow the guidance for Persons who tested positive for COVID-19. If the results are negative, the person will require to isolate themselves in their home for 14 days from the date of close contact with the person who tested positive.

Non-employees who had close contact with a person known to have COVID-19 shall notify the SMHWC (715-793-5087) of the close contact and isolate themselves in their home. Contact tracers will interview those with close contact to confirm the contact. If the contact is confirmed, those with close contact will be tested for COVID-19. If the results are positive the person will follow the guidance for Persons who tested positive for COVID-19. If the results are negative, the person

will require to isolate themselves in their home for 14 days from the date of close contact with the person who tested positive.

All Close Contacts- While in the 14-day isolation, all persons shall isolate themselves at home and monitor themselves for symptoms. The person shall limit travel outside of the home to those trips that are absolutely necessary for food and supplies. The person shall wear a mask when making those trips and limit exposure to others in the household. The person should contact the clinic at 715-793-5087 if they develop symptoms. If symptoms become severe or life-threatening they should call 911 or go to the Emergency Room.

Close Contacts are released from isolation if they do not develop symptoms within the 14-day period while potentially infectious.

**Healthcare Workers**

Healthcare workers who test positive will follow the guidance described in the section titled "Persons who tested positive for COVID-19"

Healthcare workers who wear appropriately fitted PPE (at minimum: N-95 or PAPR) are excluded from the isolation requirements for close contact or indirect contact. Healthcare workers will report any suspect contact or symptoms immediately. The SMHWC Medical Director or designee physician or nurse practitioner will determine when the healthcare worker can return to work or if an isolation period is required.

Healthcare workers who have been fully vaccinated are exempt from close contact or indirect contact isolation requirements. They will wear a fitted N-95 or PAPR unless they are the only person in a room with the door closed. Healthcare workers will report any suspect contact or symptoms immediately. The SMHWC Medical Director or designee physician or nurse practitioner will determine when the healthcare worker can discontinue use of the N-95 or PAPR or if an isolation period is required.

**PERSONS WHO NEED TO MONITOR HEALTH CONDITION**  
People who have Indirect Contact with a person identified as having COVID-19 or those who had Indirect Contact (2 days prior or less) to a person who later tested positive for COVID-19.

Employees who had indirect contact with a person known to have COVID-19 shall notify Occupational Health of the indirect contact. Contact tracers will interview those with indirect contact to confirm the contact was not close contact. If the contact is confirmed as indirect, the person will be required to test for COVID-19. If the results are

**Plan continued on pg Fourteen:**

**Attention:**

PRC requires that ALL patients must take their referrals to their appointments.

\*If any follow ups are needed, you must contact referral office 3 days prior to appointment.



**On Tuesday, February 2<sup>nd</sup>, 2021, the Stockbridge-Munsee Tribal Council held a Regular Tribal Council Meeting and at the time the following were taken:**

**Roll Call:**

Shannon Holsey;	Present
Jolene Bowman;	Present
Terrie Terrio;	Present
Jeremy Mohawk;	Present
Martin Welch;	Present
Marv Malone;	Present
Craig Kroening Jr.;	Absent

**CALL TO ORDER-**

The meeting was called to order at 5:00pm by President Holsey.

**MOMENT OF SILENCE-**

**APPROVAL OF AGENDA-**Motion by Terrie K. Terrio to approve the agenda of Tuesday February 2<sup>nd</sup> 2021 with the additions of the Public Health Order and an update on an Elderly Hardship Issue; striking the board/committees stipends and the enrollment items for Executive Session and moved for a Special meeting on Friday 2/5/21 to discuss then. Second by Jolene Bowman. Motion Carried.

**OPEN AGENDA-**No comments/questions brought up.

**MEETING MINUTES-** Motion by Jolene Bowman to approve the meeting minutes from January 19<sup>th</sup>, 2021. Seconded by Marv Malone. Motion carried.

**SITE AUTHORIZATION REQUEST/APPROVAL OF DOCTORAL STUDY-Thomas Wilbur** Motion by Jolene Bowman to approve the site authorization for Thomas Wilbur to conduct research on how Native American Tribal Leaders describe the applicability of the Seven Generations Theory for long term planning, organizational effectiveness, and leadership, in today's tribal organizations. Seconded by Brock Schreiber.

**Roll Call:** Jolene Bowman-Yes. Marv Malone- Abstains Brock Schreiber- Yes. Terrie K. Terrio-Yes. Joe Miller- Abstains. Motion Carried.

**RESOLUTION: NIGA-** Motion Jolene Bowman to approved Resolution 020-21

**NATIONAL INDIAN GAMING ASSOCIATION**

**DATE:** February 2, 2021 **NO.** 020-21

**WHEREAS,** Stockbridge-Munsee Band of Mohicans wishes to join the National Indian Gaming Asso-

ciation (NIGA) for the year 2021; and,

**WHEREAS,** NIGA is an inter-tribal association of federally recognized tribes, communities, rancherias, colonies, pueblos, bands, nations, or other federally recognized tribal groups or communities of Indians ("Tribes" herein); and,

**WHEREAS,** the primary purposes of NIGA are:

1. To promote, protect, and preserve the general welfare and interest of Indian gaming tribes through development of sound policies and practices with respect to the conduct of gaming activities in Indian Country;
2. To assist in dissemination of information to the Indian gaming community, federal government, and the general public on issues related to the conduct of gaming in Indian Country;
3. To preserve and protect the integrity of gaming in Indian Country;
4. To maintain, protect, and advocate Indian tribal sovereignty; and,

**WHEREAS,** Stockbridge-Munsee Band of Mohicans meets all the requirements for Tribal Membership pursuant to Part 5, "Classes Qualifications, and Rights of Membership," of the NIGA bylaws; now,

**THEREFORE, BE IT RESOLVED,** the Stockbridge-Munsee Band of Mohicans authorizes the payment of dues for NIGA Tribal Membership; and

**BE IT FURTHER RESOLVED,** Stockbridge-Munsee Band of Mohicans appoints the following delegates and alternate delegate(s) as the Tribe's representative to NIGA:

**Delegate:** Shannon Holsey, Tribal President  
**Alternate(s):** Jolene Bowman, Vice President  
Terrie K. Terrio, Tribal Treasurer  
Marv Malone, Tribal Council Member  
Brock Schreiber, Tribal Council Member  
Joseph Miller, Tribal Council Member  
Craig Kroening, Jr., Tribal Council Member

**BE IT FINALLY RESOLVED,** the above appointments will remain effective for 2021 and/or until replaced by the Tribe's governing body. Seconded by Terrie K. Ter-

rio. Motion Carried

**AGRICULTURE LAND-Bid for Approval-Kellie Zahn, Ag Agent** Motion by Joe Miller approved bids for Robert Lepak and Jesse Mueller. Seconded by Marv Malone. Joe Miller amended motion to approve bid for Jesse Mueller and Reobert Lepak's request for right of first refusal on the acres he is leasing. Seconded Amendment by Marv Malone. Motion carried.

**EMERGENCY SHELTER POLICIES & PROGRAM REQUIREMENTS (updated)-Kori Price, Family Services Manager** Motion by Brock Schreiber to approve the updates to the Emergency Shelter policies and program requirements. Seconded by Terrie K. Terrio. Motion carried

**GLITC SAVING LIVES PROJECT GRANT 2021-Andrew Miller, SMHWC Director** - Motion by Jolene Bowman to approve budget for the GLITC Saving Lives Grant 2021 grant. Seconded by-Terrie K. Terrio. Motion carried.

**BOARD/COMMITTEE MEETING MINUTES-Fish & Wildlife Board and Land Committee - Sterling Schreiber Jr.** Motion by Joe Miller to accept meeting minutes of the Regular Fish and Wildlife Board on December 9<sup>th</sup> Seconded by Marv Malone. Motion is carried. Motion by Terrie K. Terrio accept the meeting minutes for the Land Committee from December 17, 2020 with the action. Seconded by Joe Miller. Terrie K. Terrio amends her motion to accept the Dec 17<sup>th</sup> Land Committee meeting minutes with the action for Harlee Pagryzinski. Seconded by Joe Miller. Motion Carried.

**PUBLIC HEALTH ORDER - EXTENDING TO March 2021** - Motion by Jolene Bowman to extend the Public Health Order for COVID-19 to 8 am March 6<sup>th</sup>, 2021. Seconded by Marv Malone. No Discussion. Motion carried.

**COUNCIL COMMENTS & ITEMS FOR FUTURE CONSIDERATION- EXECUTIVE SESSION: Audit Report, Ella Besaw Request, Descendant Request and Tribal Member Request, Contract** Motion by Jolene Bowman to go into Executive Session. Seconded by Marv Malone. Motion carried at 5:40pm.

Motion Jolene Bowman to come out of Executive Session. Seconded by Marv Malone. Motion carried at 6:37pm.

Motion by Terrie K. Terrio to approve amendment option # 1 as discussed. Seconded by Joe Miller. Motion carried

Motion by Terrie K. Terrio to accept audit report for loan program. Seconded by Marv Malone. Motion carried.

Motion by Jolene Bowman to go along with the recommendation for Ella Besaw as discussed. Seconded by Terrie K. Terrio.

Motion carried.

**ADJOURNMENT-**

Motion by Jolene Bowman to adjourn. Seconded by Terrie K. Terrio. Motion carried at 6:38pm

**On Friday, February 5<sup>th</sup>, 2021, the Stockbridge-Munsee Tribal Council held a Special Tribal Council Meeting and at that time the following actions were taken:**

**Roll Call:**

Shannon Holsey;	Present
Jolene Bowman;	Present
Terrie Terrio;	Present
Jeremy Mohawk;	Present
Martin Welch;	Present
Marv Malone;	Present
Craig Kroening Jr.;	Present

**APPROVAL OF AGENDA-**

Motion by Terrie K. Terrio to approve the Special Tribal Council Meeting agenda of February 5, 2021 with the addition of the Clinic. Seconded by Joe Miller. Motion carried.

**UPDATE ON VACCINATION PRIORITY LIST & ENROLLMENT LIST REQUEST-Andrew Miller, SMHWC Director**

Motion by Joe Miller that moving forward with priority list, all Tribal Members 65 years and older and their partners, and then moving incrementally in 10-year increments and continuation of their current vaccination plan. Seconded by Terrie K. Terrio.

**Roll Call:** Marv yes, Jolene abstain (*she abstained because she doesn't have the numbers of the partners to make a complete decision*) Terrie yes, Brock yes, Joe yes and Craig yes. Motion carried. Motion by Terrie K. Terrio to allow Andy to work with Enrollment to obtain the enrollment list as needed. Seconded by Craig Kroening, Jr. Motion carried.

**EXECUTIVE SESSION-**

Motion by Jolene Bowman to go into Executive Session. Seconded by Terrie K. Terrio. Motion carried at 10:47 AM.

Motion by Terrie K. Terrio to come back into Regular Session. Seconded by Joe Miller. Motion carried at 12:09 PM.

While in Executive Session discussion was held on Enrollment Meeting Minutes and a Personnel Matter.

Motion by Terrie K. Terrio to direct the President to make the inquiries that we identified in Executive Session on our behalf. Seconded by Joe Miller. Motion carried.

Motion by Joe Miller to accept the recommendation of the Enrollment Committee to enroll John M. Jacobs as identified as 1/2. Seconded by Terrie K. Terrio.

**Roll Call:** Marv yes, Jolene yes, Terrie yes, Brock abstain, Joe yes and Craig yes. Motion carried.

Motion by Joe Miller to send the application of Clorissa Vele back to the Enrollment Committee for

**Directives cont on pg Thirteen:**

**Directives cont from pg Twelve:** correction. Seconded by Terrie K. Terrio.

**Roll Call:** Marv abstain, Jolene yes, Terrie yes, Brock yes, Joe yes and Craig yes. Motion carried.

Motion by Joe Miller to accept the recommendation of the Enrollment Committee and enroll Stephania Gulbronson as 1/4. Motion maker rescinds motion.

Motion by Joe Miller to send back the application of Stephania Gulbronson back to the Enrollment Committee for clarification. Seconded by Terrie K. Terrio. Motion carried.

Motion by Joe Miller to accept the application William Rosnow as recommended by the Enrollment Committee and as established as 1/4. Seconded by Terrie K. Terrio.

**Roll Call:** Marv yes, Jolene yes, Terrie yes, Brock abstain, Joe yes and Craig yes. Motion carried.

Motion by Joe Miller to accept the recommendation of the Enrollment Committee and enroll Bradley J. Moore as 1/4. Seconded Terrie K. Terrio.

**Roll Call:** Marv yes, Jolene yes, Terrie yes, Brock abstain, Joe yes and Craig yes. Motion carried.

Motion by Joe Miller to approve the recommendation of the Enrollment Committee and enroll William Moore, Jr. as 1/4 Stockbridge. Seconded by Terrie K. Terrio.

**Roll Call:** Marv yes, Jolene yes, Terrie yes, Brock abstain, Joe yes and Craig yes. Motion carried.

Motion by Joe Miller to approve the recommendation of the Enrollment Committee and accept the application of Michael D. Peters as 1/4. Seconded by Terrie K. Terrio.

**Roll Call:** Marv yes, Jolene yes, Terrie yes, Brock abstain, Joe yes and Craig yes. Motion carried.

Motion by Joe Miller to approve the recommendation of the Enrollment Committee and accept the application of Marcia Wilming as 1/4 Stockbridge. Seconded by Terrie K. Terrio.

**Roll Call:** Marv yes, Jolene yes, Terrie yes, Brock abstain, Joe yes and Craig yes. Motion carried.

Motion by Terrie K. Terrio to enroll Ryan Peters as 1/4 as the Enrollment Committee recommended. Seconded by Joe Miller.

**Roll Call:** Marv yes, Jolene yes, Terrie yes, Brock abstain, Joe yes and Craig yes. Motion carried.

Motion by Terrie K. Terrio to enroll Stacy Hoekstra as 1/4 as recommended by the Enrollment Committee. Seconded by Craig Kroening, Jr.

**Roll Call:** Marv yes, Jolene yes, Terrie yes, Brock abstain, Joe yes and Craig yes. Motion carried.

Motion by Terrie K. Terrio to enroll Phillip Smith as 1/4 as recommended by the Enrollment Committee. Seconded by Joe Miller.

**Roll Call:** Marv yes, Jolene yes, Terrie yes, Brock abstain, Joe yes and Craig yes. Motion carried.

Motion by Terrie K. Terrio as rec-

ommended by the Enrollment Committee to enroll Arnie Knutson as 1/4. Seconded by Craig Kroening, Jr.

**Roll Call:** Marv yes, Jolene yes, Terrie yes, Brock abstain, Joe yes and Craig yes. Motion carried.

Motion by Terrie K. Terrio as recommended by the Enrollment Committee to enroll Van Knutson as 1/4. Seconded by Joe Miller.

**Roll Call:** Marv yes, Jolene yes, Terrie yes, Brock abstain, Joe yes and Craig yes. Motion carried.

Motion by Terrie K. Terrio as recommended by the Enrollment Committee to enroll Kimberly Ray as 1/4. Seconded by Joe Miller.

**Roll Call:** Marv yes, Jolene yes, Terrie yes, Brock abstain, Joe yes and Craig yes. Motion carried.

Motion by Terrie K. Terrio as recommended by the Enrollment Committee to enroll George Emerich as 1/4. Seconded by Craig Kroening.

**Roll Call:** Marv yes, Jolene yes, Terrie yes, Brock abstain, Joe yes and Craig yes. Motion carried.

Motion by Terrie K. Terrio as recommended by the Enrollment Committee to enroll Joshua Curry as 1/4. Seconded by Joe Miller.

**Roll Call:** Marv yes, Jolene yes, Terrie yes, Brock abstain, Joe yes and Craig yes. Motion carried.

Motion by Terrie K. Terrio as recommended by the Enrollment Committee to enroll Brandon Rudesill as 1/4. Seconded Craig Kroening, Jr.

**Roll Call:** Marv yes, Jolene yes, Terrie yes, Brock abstain, Joe yes and Craig yes. Motion carried.

Motion by Terrie K. Terrio as recommended by the Enrollment Committee to enroll Mckenzie Miller as 1/4. Seconded by Joe Miller. Motion carried.

Motion by Terrie K. Terrio as recommended by the Enrollment Committee to enroll Michaela Miller as 1/4. Seconded by Joe Miller. Motion carried.

Motion by Terrie K. Terrio as recommended by the Enrollment Committee to enroll Kirk Bushman as 1/4. Seconded by Joe Miller.

**Roll Call:** Marv yes, Jolene yes, Terrie yes, Brock abstain, Joe yes and Craig yes. Motion carried.

Motion by Terrie K. Terrio as recommended by the Enrollment Committee to enroll Greg Stephenson as 1/4. Seconded by Joe Miller.

**Roll Call:** Marv yes, Jolene yes, Terrie yes, Brock abstain, Joe yes and Craig yes. Motion carried.

Motion by Terrie K. Terrio as recommended by the Enrollment Committee to enroll Glenn Stephenson as 1/4 and Gary Stephenson as 1/4 as they are brothers. Seconded by Joe Miller.

**Roll Call:** Marv yes, Jolene yes, Terrie yes, Brock abstain, Joe yes and Craig yes. Motion carried.

Motion by Terrie K. Terrio to enroll Edward Elmergreen as 3/8 and Richard Elmergreen as 3/8 as

recommended by the Enrollment Committee. Seconded by Joe Miller.

**Roll Call:** Marv yes, Jolene yes, Terrie yes, Brock abstain, Joe yes and Craig yes. Motion carried.

Motion by Terrie K. Terrio in regards to the enrollment application of Lawrence Curtis to send that back to the Enrollment Office for corrections to the file. Seconded by Joe Miller. Motion carried.

Motion by Joe Miller to approve the recommendation of the Enrollment Committee and accept the application of Holly Simons as 1/4 Stockbridge. Seconded by Terrie K. Terrio.

**Roll Call:** Marv yes, Jolene yes, Terrie yes, Brock abstain, Joe yes and Craig yes. Motion carried.

Motion by Joe Miller to accept the recommendation of the Enrollment Committee and approve the application Lynell Crosby as 1/4 Stockbridge. Seconded by Terrie K. Terrio.

**Roll Call:** Marv yes, Jolene yes, Terrie yes, Brock abstain, Joe yes and Craig yes. Motion carried.

Motion by Joe Miller to accept the recommendation of the Enrollment Committee and accept the application of Timothy Plass as 1/4 Stockbridge. Seconded by Terrie K. Terrio.

**Roll Call:** Marv yes, Jolene yes, Terrie yes, Brock abstain, Joe yes and Craig yes. Motion carried.

Motion by Joe Miller to accept the recommendation of Enrollment and approve the application of Tami Frieders as 1/4 Stockbridge. Seconded by Terrie K. Terrio.

**Roll Call:** Marv yes, Jolene yes, Terrie yes, Brock abstain, Joe yes and Craig yes. Motion carried.

Motion by Joe Miller to send the application of Tammy Welch back to the Enrollment Committee for corrections in file. Seconded by Terrie K. Terrio. Motion carried.

Motion by Joe Miller to approve the recommendation of Enrollment and accept the application of Nadia Zukauska as 9/32 Stockbridge-Munsee. Seconded Terrie K. Terrio. Motion carried.

Motion by Joe Miller to send the enrollment applications of James M. Kazik, Violet Ready and Anita Hashbarger back to Enrollment for clarification. Seconded by Terrie K. Terrio. Motion carried.

Motion by Joe Miller to accept the recommendation of Enrollment and approve the application of Nancy Shampo as 1/4 Stockbridge. Seconded by Terrie K. Terrio.

**Roll Call:** Marv yes, Jolene yes, Terrie yes, Brock abstain, Joe yes and Craig yes. Motion carried.

Motion by Joe Miller to approve the recommendation of Enrollment and accept the application of Rebecca Boivin upon relinquishment as 1/4 Stockbridge. Seconded by Terrie K. Terrio. Motion carried.

Motion by Joe Miller to approve the recommendation of Enrollment and accept the application

of Corinne Hanisch as 1/4 Stockbridge. Seconded by Terrie K. Terrio.

**Roll Call:** Marv yes, Jolene yes, Terrie yes, Brock abstain, Joe yes and Craig yes. Motion carried.

Motion by Brock Schreiber to approve the enrollment application of Briarri Kroening at 1/4 Stockbridge-Munsee. Seconded by Terrie K. Terrio.

**Roll Call:** Marv yes, Jolene yes, Terrie yes, Brock yes, Joe yes and Craig abstain. Motion carried.

Motion by Brock Schreiber to the approve the enrollment application of Carson Kroening at 1/4 Stockbridge-Munsee. Seconded by Terrie K. Terrio.

**Roll Call:** Marv yes, Jolene yes, Terrie yes, Brock yes, Joe yes and Craig abstains. Motion carried.

Motion by Brock Schreiber to approve the enrollment application of Bert Moede III at 1/4 Stockbridge-Munsee. Seconded by Terrie K. Terrio.

**Roll Call:** Marv yes, Jolene yes, Terrie yes, Brock yes, Joe yes and Craig abstains. Motion carried.

Motion by Brock Schreiber to approve the enrollment application of Cienna Moede at 1/4 Stockbridge-Munsee. Seconded by Terrie K. Terrio.

**Roll Call:** Marv yes, Jolene yes, Terrie yes, Brock yes, Joe yes and Craig abstains. Motion carried.

Motion by Brock Schreiber to approve the enrollment application of Kurtis Perez, Jr., Kayniah Perez, Taidyn Perez all at 33/128 Stockbridge-Munsee. Seconded by Terrie K. Terrio.

**Roll Call:** Marv abstain, Jolene yes, Terrie yes, Brock yes, Joe yes and Craig abstains. Motion carried.

Motion by Brock Schreiber to approve the enrollment application of Treyvon Granquist at 33/128 Stockbridge-Munsee. Seconded by Terrie K. Terrio.

**Roll Call:** Marv abstain, Jolene yes, Terrie yes, Brock yes, Joe yes and Craig abstain. Motion carried.

Motion by Brock Schreiber to approve the enrollment application of Lane Schultz and Danian Schultz both at 1/4 Stockbridge-Munsee. Seconded by Terrie K. Terrio.

**Roll Call:** Marv yes, Jolene yes, Terrie yes, Brock yes, Joe yes and Craig abstains. Motion carried.

*Council Member Brock Schreiber wanted it noted for the record that the reason he abstained is surely not to exclude, but from he feels from his seat and his perspective that if he hadn't had hands on with those family trees in those files and not having the information to see where that blood is recognized off of what rolls. He is not in a position where he is comfortable to make decision with not seeing that information.*

#### ADJOURNMENT-

Motion by Joe Miller to adjourn. Seconded by Terrie K. Terrio. Motion carried at 12:31 PM.

**Plan cont from page Twelve:**  
positive the person will follow the guidance for Persons who tested positive for COVID-19. If the results are negative, the person will be cleared for work, but shall monitor themselves for symptoms and notify Occupational Health if symptoms appear.

Non-Employees who had indirect contact with a person known to have COVID-19 will be offered a COVID-19 test. If the results are positive the person will follow the guidance for Persons who tested positive for COVID-19. If the results are negative, the person shall monitor themselves for symptoms and notify Triage at 715-793-5087 if symptoms appear.

**SELF-ISOLATION REQUIRED PENDING FURTHER DIRECTION**  
Persons who have symptoms of COVID-19 (fever, cough, shortness of breath, fatigue, sore throat, muscle pain, headache, congestion or runny nose, nausea, diarrhea, loss of taste or smell).

Employees who have two or more symptoms of respiratory illness such as Fever, Cough, shortness of breath, fatigue, sore throat, muscle pain, headache, congestion or runny nose, nausea, diarrhea, loss of taste or smell shall isolate themselves at home and contact Occupational Health. The employee will be required to test for COVID-19 or may be required to complete a 14-day isolation of which the last 24 hours must be asymptomatic based on medical direction. Employees will require medical authorization clearing them to return to work.

Non-employees who have two or more symptoms of respiratory illness such as Fever, Cough, shortness of breath, fatigue, sore throat, muscle pain, headache, congestion or runny nose, nausea, diarrhea, loss of taste or smell shall isolate themselves at home and contact Triage at 715-793-5087. The person will be evaluated and treated as directed by medical staff.

**GENERAL GUIDANCE**

Community members who have a different scenario than listed

above, or have a concern about COVID-19:

Everyone should monitor themselves for symptoms of illness, limit travel, and practice social distancing. Social distancing means staying 6 feet or more away from others. If a community member has concerns or questions about COVID-19, they can call 1-833-679-0136 for more information on COVID-19.

If the person starts experiencing symptoms of Covid-19 (fever, cough, shortness of breath, fatigue, sore throat, muscle pain, headache, congestion or runny nose, nausea, diarrhea, loss of taste or smell) they should call the Stockbridge-Munsee Health & Wellness Center Triage line at 715-793-5087 or their medical provider. If the person is a Stockbridge-Munsee Community Employee, they shall also inform Occupational Health.

**Contact Tracing**

The Tribe's Community Health Department is functioning as a tribal public health agency for this COVID-19 public health emergency. As COVID-19 is a communicable disease, this means the Tribe needs to identify people who have been in contact with a person who tested positive for COVID-19 as those contacts were exposed to the disease.

Contact Tracers are required to keep the identification of a person who tested positive for COVID-19 private as they contact other people who may have been exposed. Contact tracers will not confirm, deny, or disclose the identity of someone who tested positive to those they are contacting. The individual who tested positive may self-disclose their status.

Contact tracers may through the interview process, identify someone as having contact with a person who has tested positive for COVID-19. Contact tracers will identify the person as being a household contact or having close contact or indirect contact. If a person (both employee or non-employee) is identified as having a contact with person who tested

positive for COVID19, they must follow the guidance in this Plan that matches their level of contact. If the contact level is not clear to the contact tracers, but contact exists, the person will be considered as having close contact.

The Tribe, as part of its workplace-related medical surveillance plan for COVID-19, refers all employees for testing if they are identified as a household or close contact through contact tracing. Based on this referral, Community Health will inform the Tribe's HR and/or Occupational Health Departments of test and quarantine/isolation status of employees.

The following are the normal types of questions that contact tracers ask people as part of the contact tracing process. Both the Primary person (person who tested positive for COVID-19) and other people identified as potential contacts area contacted.

- 1) Name 2) Date of birth 3) Sex
- 4) What is your occupation and name of workplace?
- 5) Are you in close contact with other people while you are at work?
- 6) Do you work in a health care, long-term care facility, or a setting that serves elderly?
- 7) Where do you live?
- 8) Who else lives with you?
- 9) Where do the others in your household work?
- 10) What date did symptoms first occur?
- 11) What symptoms have you experienced?
- 12) Did you have a COVID-19 test? If so, when? Where were you tested, what were the results?
- 13) Have you had close contact with other community members who are not in your household over the last 14 days prior to onset of symptoms? If so, who?

[www.perrethomesinc.com](http://www.perrethomesinc.com)



**Country Squire  
In Stock & Ready  
For Viewing**

**Call On Our  
New 2018 Models  
COMING SOON**



**Perret  
Homes**

**CUSTOM BUILDERS  
SINCE 1946**

**1100 VELD AVE.  
GREEN BAY, WI**  
TOLL FREE (866) 433-1442

**Veale Construction**

**Lifetime guarantee!**  
Jeff Veale, Sr.

W13593 Putnam Lane  
Bowler, WI 54416

**715-793-4648**  
(Text or leave message)

Decks, doors, windows,  
flooring, siding and soffit,  
bathroom remodeling,  
plumbing repairs.

*Excellent work and reasonable  
rates! Fully Insured!*

**We've Got Gas...  
and more...**

- Service up to 25 miles from Bowler
- 24 Hour Emergency Service
- 715-793-4832**
- Residential and Business Accounts
- Wisconsin Energy Assistance Vendor

W13817 County Highway A P.O. Box 70 Bowler, WI 54416

For more information please visit [www.mohican.com](http://www.mohican.com)





**MOHICAN  
LP GAS CO.**

715-793-4832  
Bowler, WI



MOHICAN NATION  
STOCKBRIDGE-MUNSEE BAND



**GARESHAM  
AUTO BODY LLC**

321 Main Street • Gresham • 715-787-3370

We would like to thank you for your business and remind you, by State law, you can take your vehicle to the shop of your choice with only one estimate. We offer a discount to all tribal members and free rentals on insurance claims.

*Proudly employing tribal members for fifteen years.*

**Stockbridge-Munsee Family  
Family Services/Domestic Abuse**

ABUSE EFFECTS THE WHOLE COMMUNITY

- Supportive Advocacy
- Emergency Transportation to Shelter
- Restraining Order Assistance
- Abuse Education
- Information and Referral
- Community Education
- Education Planning
- Forecasting

715-793-4863  
or 715-881-0488  
or 715-793-4780

Statewide Shelter Hot Line  
800-236-7660



National Dom. Abuse Hot Line:  
800-787-3224/800-799-7233

N8476 Moh He Con Nuck Road  
P.O. 70  
Bowler, WI 54416

Need to talk or need support please Call: Client Services Advocate :

# First National Bank

Bowler  
Bowler – Wisconsin – 54416  
(715) 793-5200  
Bowler, WI and Tigerton, WI

**Safety. Soundness. Strength.**

**Our basic mission**  
As your community bank, our basic mission is to provide you with a safe place to keep your money, a good place to have it grow, and a trusted place to borrow it. This has never changed. It never will.

Strength. Safety. Soundness. We will never forget our basic mission. We will never forget our commitment to you!  
"Here to Serve All Your Banking Needs" Each Depositor Insured to at least \$250,000

Open your account today!

**FDIC**

**Hours: Monday - Friday 9:00 AM - 4:30 PM  
Saturday 9:00 AM - 11:30 AM**

**Hot  
Fresh  
Fried  
Chicken  
To Go**





Hot Food, Weekly Deli Specials, Car Wash, Firewood.

**Hours**  
6 AM - 12 AM Daily

**Mohican Apparel**

**Gift Certificates**

**Pine Hills To Go**

Pop, Chips, Candy & Nuts

W12140 County Highway A  
Bowler, WI 54416  
**715-787-4070**

Gas, Meds, Dry Goods

**NOW OPEN**

**CASH ONLY**

**Savers Food Mart LLC**

**STOP BY AND SEE WHAT WE HAVE TO OFFER!**

**GREAT OPTIONS, LOW PRICES!**

Tuesday- Friday  
11 am to 6 pm  
Saturday 10 am to 2 pm

Located at  
**735 Fifth Ave., Antigo, WI**

**Offering Groceries and Pet Food at Discounted Rates.**




Community Banking the Way it Should Be.

*Bay Bank is proud to bring the dream of homeownership to Indian Country with the*  
**Section 184 Indian Home Loan Program**

If you are an enrolled member of a federally recognized tribe or an Alaskan Native you may be eligible for the Section 184 loan program.

**Program Highlights**

- ✓ Purchase, Refinance or New Construction
- ✓ Financing available on fee simple, tribal trust and individual trust land
- ✓ Low Minimum Down Payment
  - Loans \$50,000 or under 1.25% down
  - Loans over \$50,000 2.25% down
- ✓ No Private Mortgage Insurance (PMI) required
- ✓ 15, 20, or 30 Fixed Rate Mortgage
- ✓ No maximum income limits
- ✓ Flexible underwriting
- ✓ No minimum credit score

**Contact a lender today!**  
920-490-7600

Apply online at:  
[www.baybankgb.com](http://www.baybankgb.com)

Office of Native American Programs

2555 Packerland Drive • P.O. Box 10855 • Green Bay, WI 54307

**FDIC** EQUAL HOUSING LENDER  
NMLS# 440202



# North Star

MOHICAN CASINO • RESORT



# PLAY IT SAFE!

**HOURS** 

7AM - 3AM DAILY  
FRI. & SAT. 24 HOURS

[NorthStarCasinoResort.com](http://NorthStarCasinoResort.com)

800.775.CASH